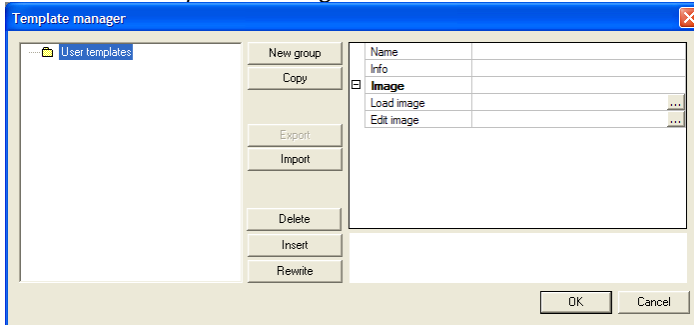


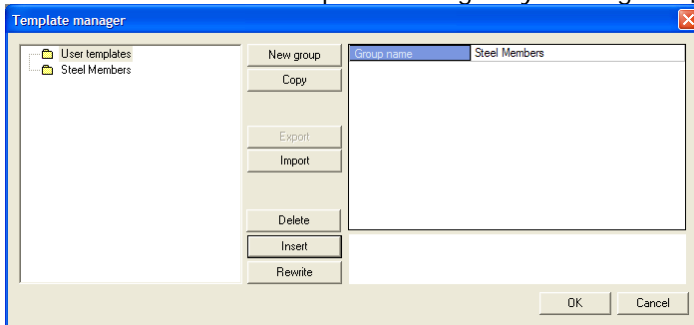
Steel Member templates

Installation of the templates

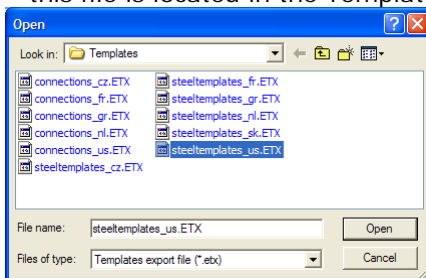
1. Run *File – Template Manager* from the standard menu



2. Create a new folder where these templates will be stored :
Click on the [New group] button, and input the name of the folder (e.g. 'steel members')
Add this folder to the Template manager by clicking the [Insert] button



3. Choose the newly created folder 'steel members'
Import the templates by clicking on the [Import] button and browse for the appropriate *.etx file – this file is located in the Templates folder on the root of the installation CD.

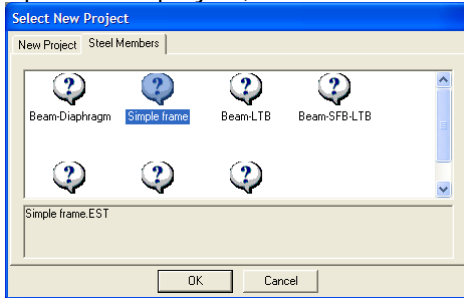


4. Clicking [OK] will close the Template manager

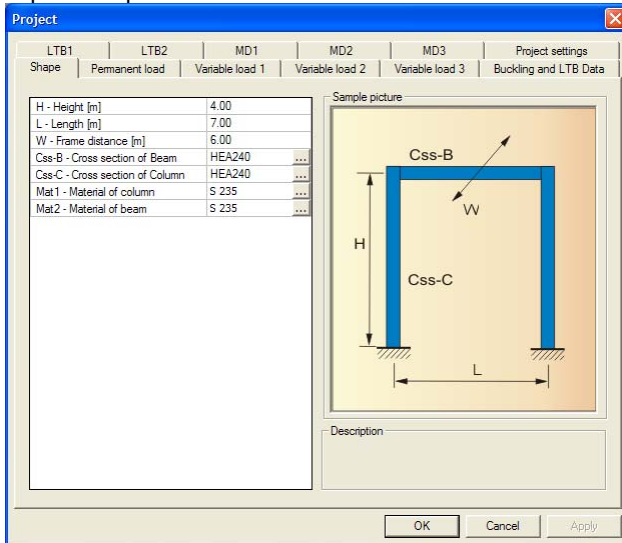
From now on, every time you open a new project in SCIA.ESA PT or a parametric project in SCIA.One Dialog, you will be able to choose from these templates.

Using the templates in SCIA.ESA PT

1. Open a new project, and choose one of the templates in the Steel Members tab



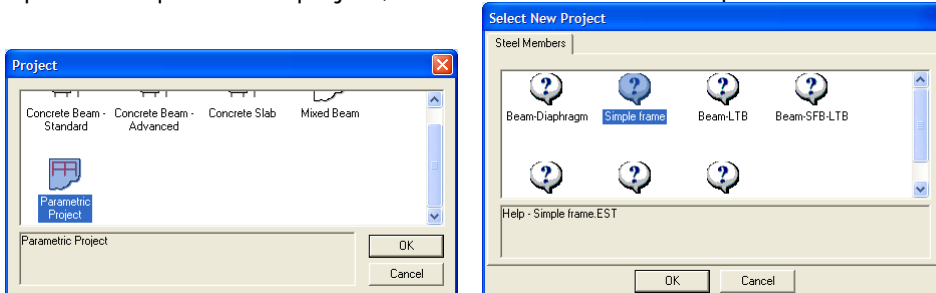
2. Input the parameters in each tab



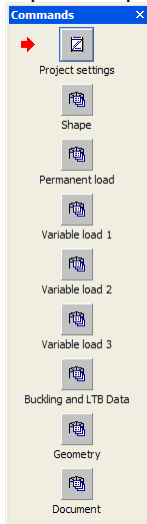
3. Clicking the [OK] will generate the geometry, loads,... in SCIA.ESA PT
4. Use the appropriate SCIA.ESA PT functionality for editing and designing the steel members: see the standard SCIA.ESA PT manuals for more detailed information on how to handle with steel members

Using the templates in SCIA.One Dialog

1. Open a new parametric project, and choose one of the templates in the Steel Members tab



2. Input the parameters, using the tabs in the command window



3. Use the appropriate SCIA.ESA PT functionality for editing and designing the steel members: see the standard SCIA.ESA PT manuals for more detailed information on how to handle with steel members