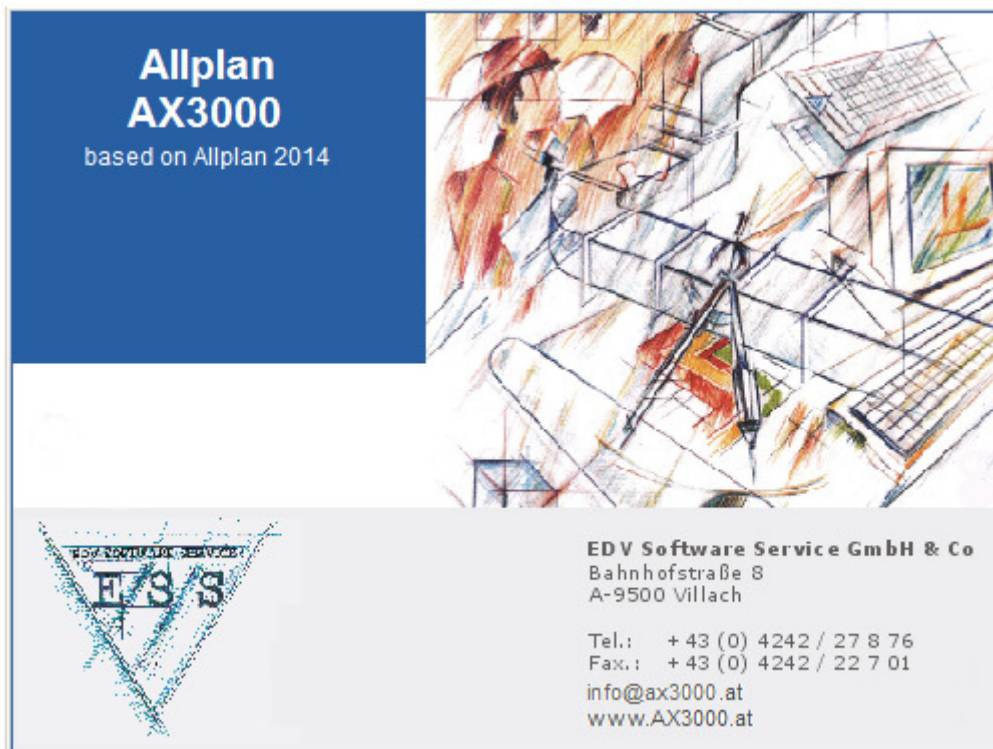
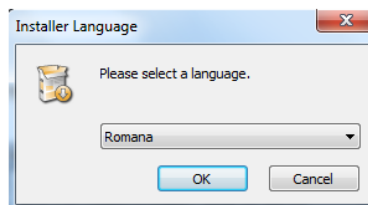


Procedura instalare

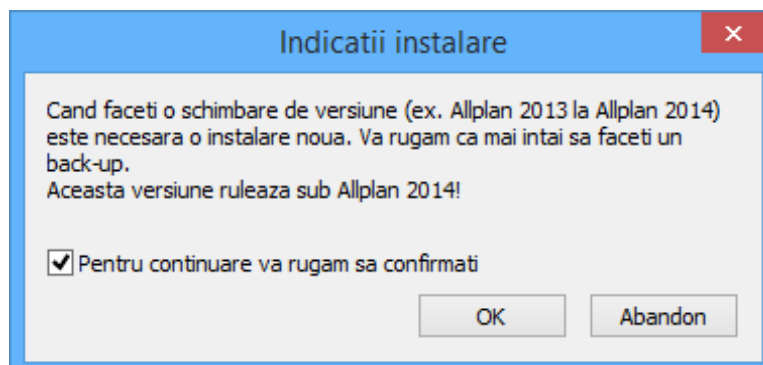
Faceti dublu click stanga pe kit-ul de instalare AX3000.



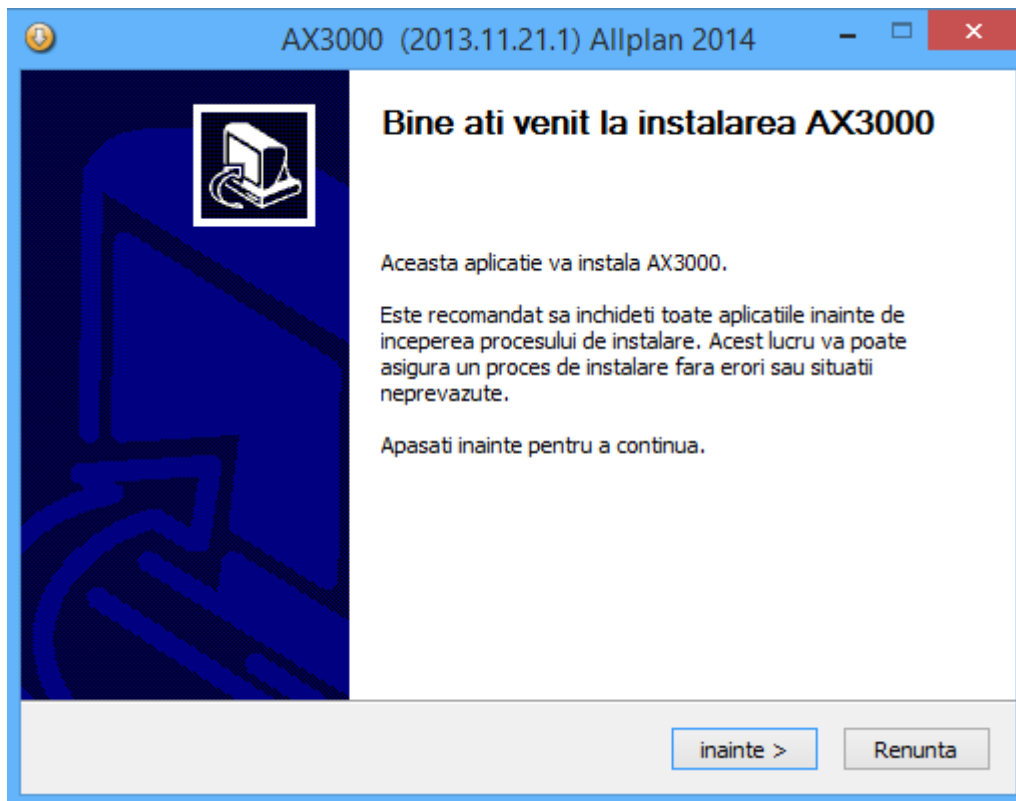
Selectati limba romana pentru instalare, apoi confirmati cu OK.



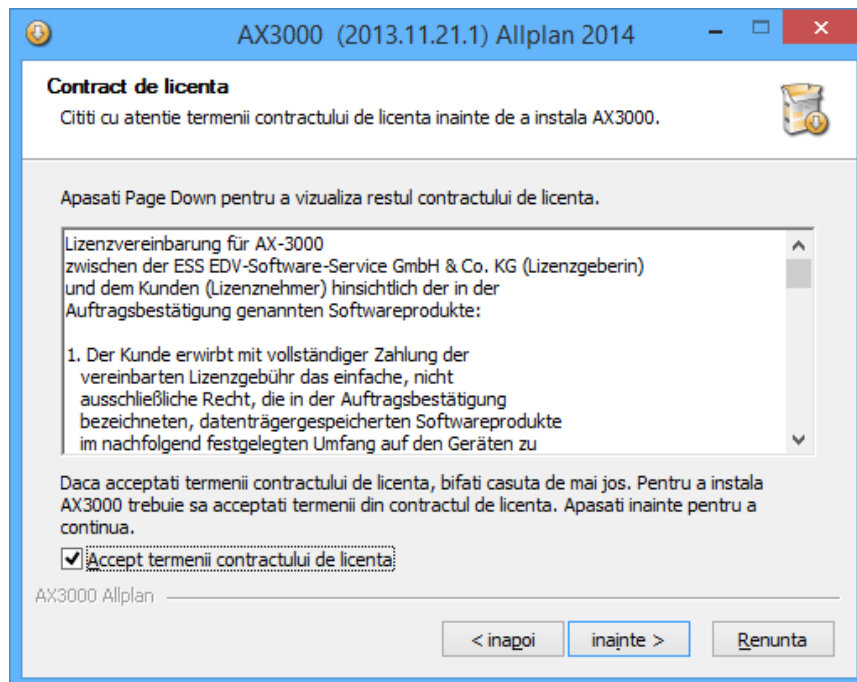
Bifati optiunea „Pentru continuare confirmati” si faceti click pe butonul OK.



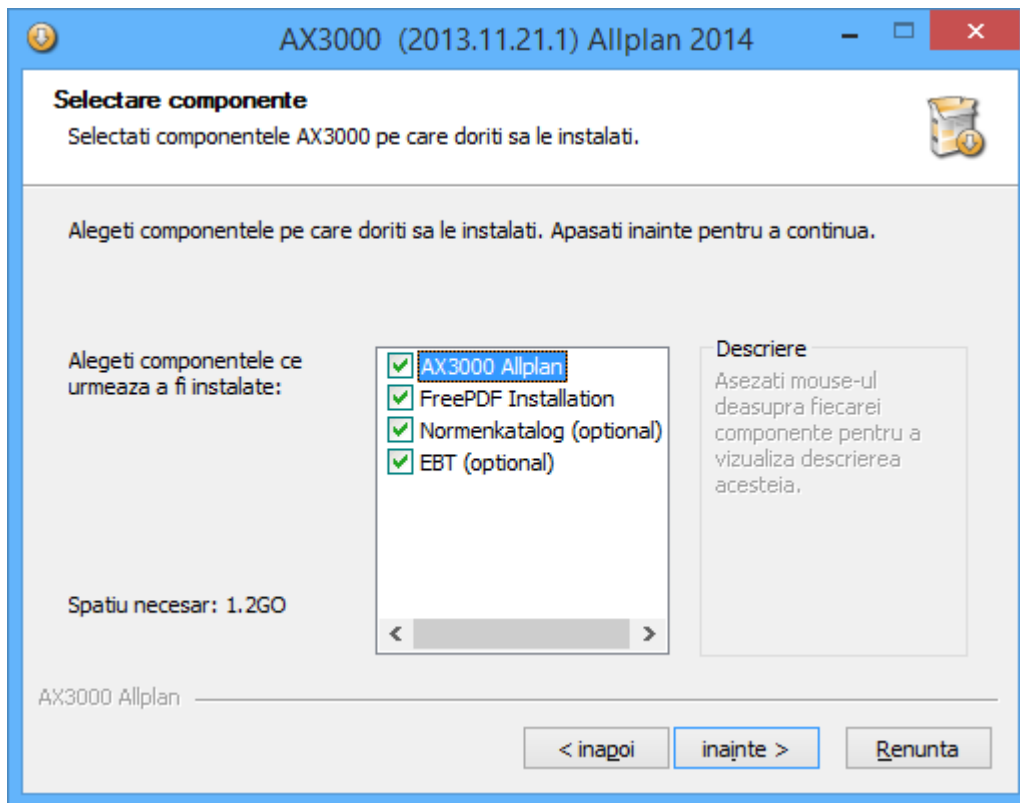
Confirmati cu „Inainte” fereastra de „Bun venit”.



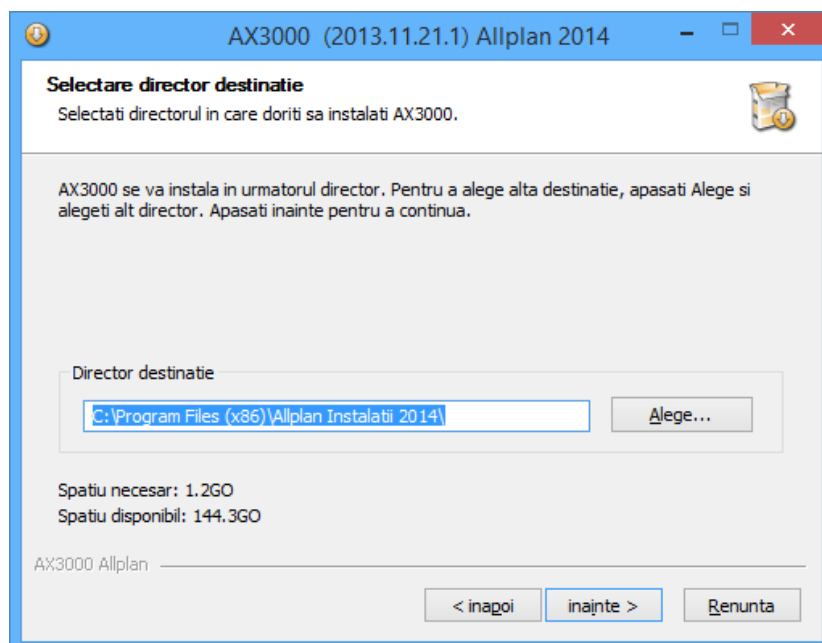
Bifati optiunea pentru acceptarea termenilor contractului de licenta si confirmati cu „Inainte”.



Confirmati urmatoarea fereastră facand click pe butonul „Inainte”

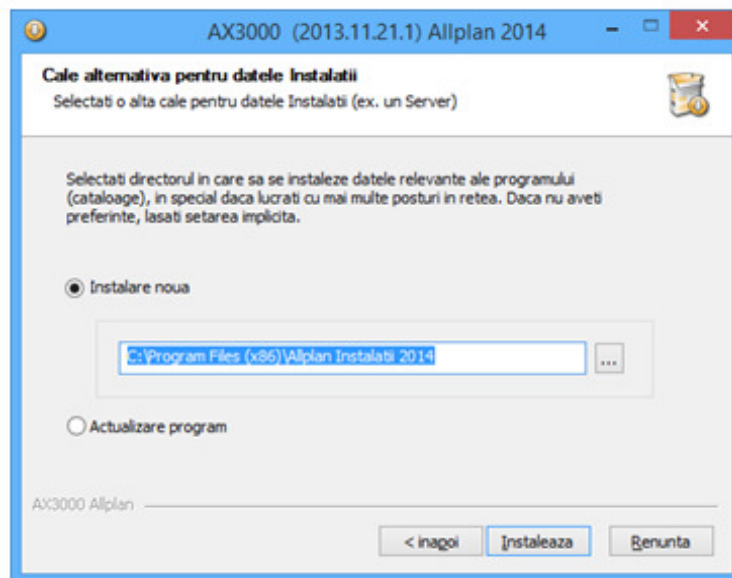


Alegeti calea de instalare a programului facand click pe butonul „Alege...” sau lasati-o pe cea default. Faceti click pe butonul „Inainte”.

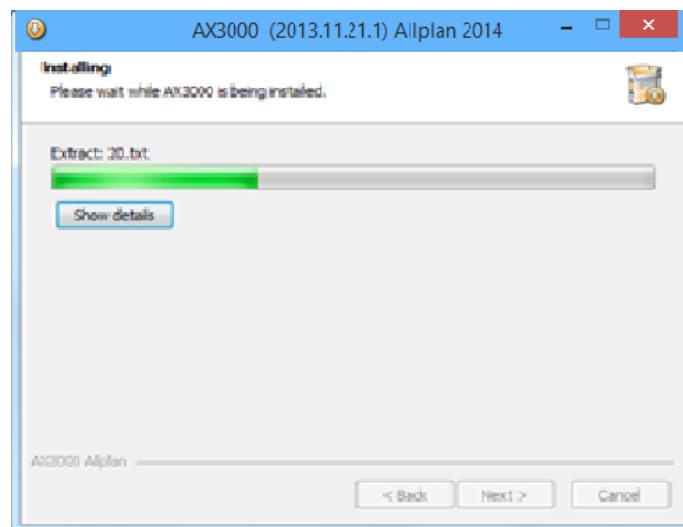


Bifati optiunea „Instalare noua”.

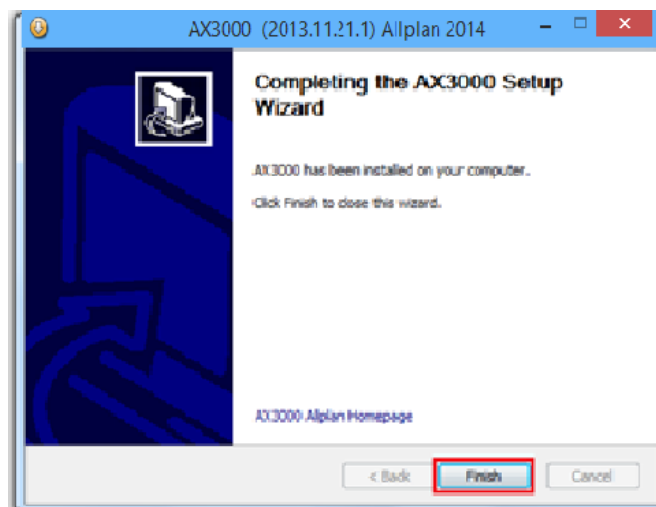
Confirmati facand click pe butonul „Instaleaza”.



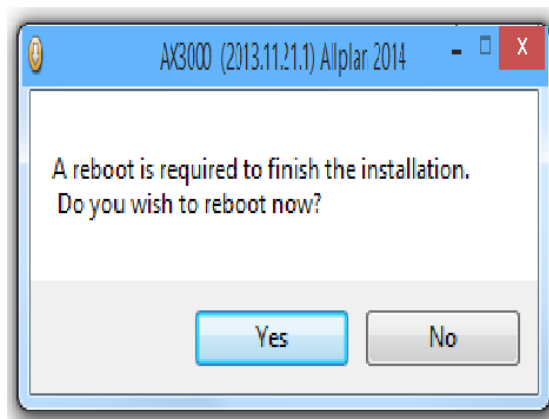
Instalarea programului incepe.



Dupa terminarea instalarii faceti click pe butonul „Terminare”.



O repornire a sistemului este necesara. Confirmati cu OK.





Dupa repornirea sistemului faceti dublu click pe iconita Allplan 2014 .

Allplan 2014 va porni.

