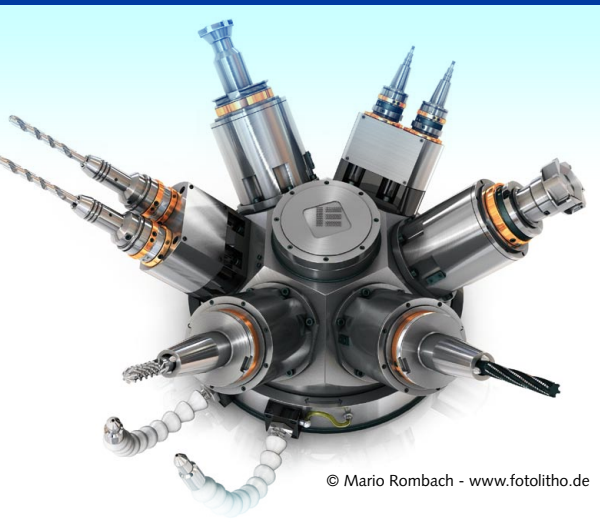




© www.bediff.com



© Mario Rombach - www.fotolitho.de



© Herrmannsdörfer - www.verticalroom.de

MAXON Computer • www.maxon.net
 Germany • USA • UK • Japan • France

MAXON, CINEMA 4D and BodyPaint 3D are registered trademarks or trademarks of MAXON Computer GmbH in Germany and/or other countries. All other brand names, product names, or trademarks belong to their respective holders. MAXON reserves the right to alter product offerings and specifications at any time without notice, and is not responsible for typographical or graphical errors that may appear in this document. © 2010 MAXON Computer All rights reserved.

The New CINEMA 4D Visualize

The power of the CINEMA 4D Architecture and Engineering Editions (previously available separately) has been combined combined into a single, mighty package: CINEMA 4D Visualize.

Compared with the former Architecture Edition, this version comes topped with a 3-client network renderer, new materials and environment scenes. Owners of the former Engineering Edition will benefit from the added Global Illumination and hundreds of decorative objects.

The features of new CINEMA 4D generation make working with Release 12 a dream for everyone creating visualizations.

New in Release 12

- IES light data support for easy and realistic lighting
- OpenGL is now even faster and offers higher display quality
- Linear workflow and color profiles ensure optimum image quality
- New parametric shaders for brick walls and pavement
- True units of measurement
- Python integration allows easy scripting and enhancements
- Double precision allows for scenes of almost any dimension
- And much more ...



© Ludwig Desmet - www.renderhouse.eu

MAXON

3D FOR THE REAL WORLD

WWW.MAXON.DE



CINEMA 4D VISUALIZE R12



© Igarashi Design - www.id-performance.com



© Lissone3D and Noel Robinson Architects



© Herrmannsdörfer - www.verticalroom.de

The Professional Solution for Architects and Desingers

Whether you need to visualize a mobile phone, a building, a car or anything else, CINEMA 4D Visualize provides everything you need to produce fantastic results quickly and easily.

CINEMA 4D Visualize has a massive range of import options that let you work with models from a large variety of applications. Support is available for many leading CAD applications such as

VectorWorks, ArchiCAD and Allplan and numerous other import options.

CINEMA 4D Visualize's potent combination of features ensures that you can create easy walk-throughs and beautiful stills as well as breathtakingly realistic animations in which cars drive, doors open, fountains flow, lights dim, the weather changes, movies play on screens and cameras fly around your scenes.

- Direct connectivity to many leading CAD applications
- Includes comprehensive material and object libraries
- Easy to use



MAXON

3D FOR THE REAL WORLD



DECC S.C. Project by Legoretta + Legoretta



© Herrmannsdörfer - www.verticalroom.de

Well-Connected

When it comes to acquiring a 3D model to create a beautiful picture, CINEMA 4D Visualize is king. The direct connection to leading CAD applications such as Allplan, ArchiCAD and Vectorworks allows for enhanced options such as the update function to incorporate later changes without losing work already done.

With the support of generic CAD formats like IGES, DWG or DXF, and more than a dozen standard 3D formats, including DAE, FBX, VRML2, OBJ and 3DS, you can get almost any 3D model into CINEMA 4D Visualize – while preserving the file structure.

And with the Okino bridge plugin you can seamlessly access the import options of the PolyTrans converter from Okino Computer Graphics to add another 20+ supported file formats.

Toolset

Magic is no longer needed to create breathtaking visualizations of your CAD project. CINEMA 4D boasts a complete 3D toolset ready to help you create stunning visualizations.

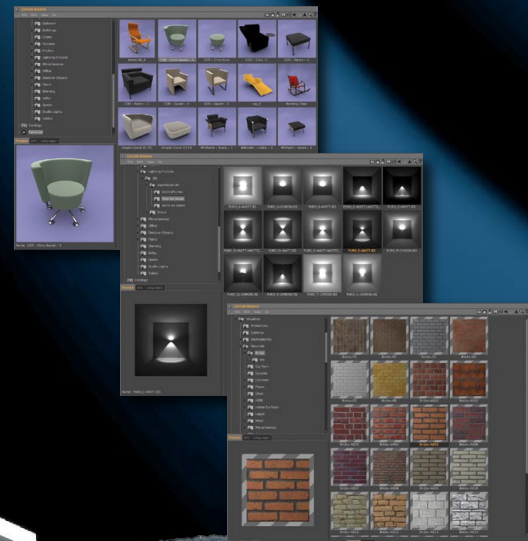
You have modeling functions to create or modify geometry, comprehensive materials that can imitate even the most complicated surface and a powerful set of animation features to set everything into motion, from simple camera movements to a lively scenery.

CINEMA 4D Visualize also offers a toolset for realistic lighting. No matter if you use a photo studio setup or need to create an outdoor daylight scene for an architectural image – CINEMA 4D Visualize breaks through the limits of your own imagination.

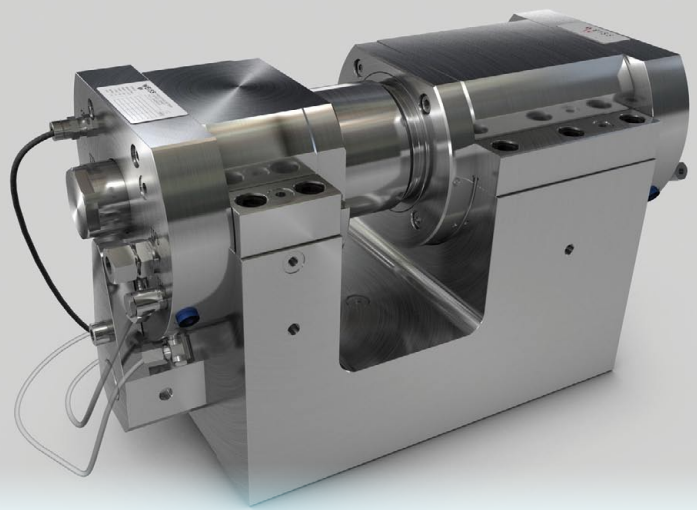
Libraries

Time is money. That's why we have included a huge library filled with over 650 high-quality materials and textures for architectural and design purposes. If you prefer a hand-drawn look, we have more than 100 sketch materials for you.

More than 500 objects are also available for enhancing your scenes. Included are many types of furniture and accessories, streets, plants and vehicles. Over 100 human figures are available in different styles to match your project just perfectly, and for lighting your scene realistically we've added over 90 IES light data sets. You can start creating great visualizations right out of the box!



© Herrmannsdörfer - www.verticalroom.de



© Johannes Veith ::joshi-veith.de::

© Matthias Pfrang - www.weissgmbh.de

Render Your Images and Animations

Once everything has been set up it's time to render your project. CINEMA 4D boasts the latest technology to squeeze every bit of power out of modern multi-core CPUs and 64-bit operating systems for either Windows or Mac OS X.

You can choose either a photorealistic rendering mode, complete with features like Global Illumination, depth of field, motion blur, lens flares and many more effects that help make your visualization look outstanding, or you select the sketch renderer for creating images in a hand-drawn look – whichever suits your needs better.

Both modes are supported by CINEMA 4D Visualize's network renderer, which helps render animations in only a fraction of the normal time by using up to three computers and combining their rendering power.



Import 3D CAD model into CINEMA 4D

Add materials and objects from our libraries

Sky and Global Illumination create realistic light

Or use the sketch renderer for handdrawn looks

VISUALIZATION WORKFLOW

ACQUIRE

- Import 3D models in more than a dozen supported file formats
- Allplan, ArchiCAD and VectorWorks offer special support for CINEMA 4D
- Use CINEMA 4D's extensive modeling tools to create any kind of technical or organic shape

ENHANCE

- Add materials from our extensive libraries or create materials yourself
- Add objects to complete the scene – our library includes human figures, furniture, environments, buildings, backgrounds and much more

ADD LIGHT

- CINEMA 4D comes with a comprehensive toolset to create:
- Realistic studio lighting situations
 - Indoor and outdoor daylight settings
 - Indoor and outdoor artificial light settings
 - CINEMA 4D fully supports Global Illumination for maximum realism

ANIMATE

- Use easy preset animations to fly around your scene or simulate a 24-hr. daylight cycle
- Use the versatile animation tools to animate doors, windows, lights, hinges or to create an animated exploded assembly rendering

RENDER

- Use the photorealistic engine or create hand-drawn looks
- Filters help adjust saturation, exposure and other settings
- Multi-Pass rendering allows perfect fine-tuning in Photoshop
- Rendering animations can be accelerated with the 3 client network renderer