

On-Site Photo 2007

Scope of supply – an overview

Rectification of photos for digital surveys, reports and plan design

With On-Site Photo, a worldwide protected procedure is placed at your disposal. Core of this patented method is the dimensionally accurate rectification of photos. The method is that simple that everyone can use it. The technical equipment must only meet low requirements.

Photogrammetry for everyone

On-Site Photo is a universal tool suitable for planners, experts, site managers and craftsmen. The user can choose whether he wants to work with the "traditional" image rectification method or directly on the original image.

- ▶ trouble-free transfer of data from all digital cameras and scanners
- ▶ image rectification on the basis of only two known lengths
- ▶ rapid correction of radial image defects caused by camera lenses
- ▶ exact working according to pixels with display of measurement accuracy

Exact measurement using a rectified photo

With On-Site Photo, extensive measurements on site are not necessary anymore. You take a picture of the desired object and determine the dimensions on your PC with a maximum accuracy. You only need two lengths to start. Thus you can easily create full-scale building plans using the Allplan CAD functionalities.

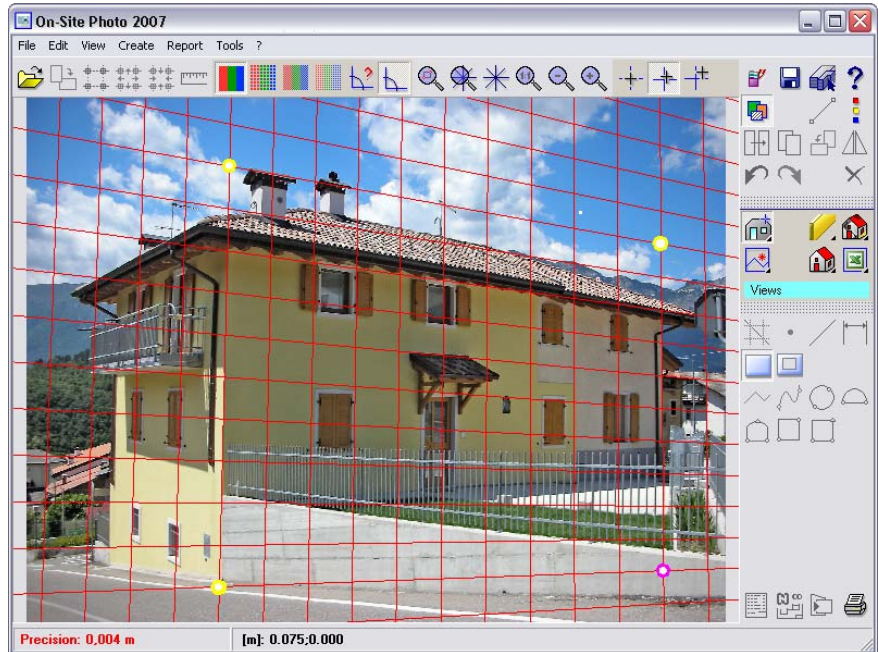


Figure: Comfortable rectification of a photo using On-Site Photo

By the way: In case of large facades you can precisely and accurately compose the overall facade using photos of facade sections.

Time-saving surface finder

The surface finder supports the automatic recognition of surfaces. Thus you do not need to manually redraw the contours with the mouse.



Figure: Surface finder

Highlights

- ▶ Exact and simple determination of dimensions from digital images
- ▶ Dimensional relation due to perspective grid and two lengths
- ▶ Optional lens correction
- ▶ Redrawing of views on digital photos
- ▶ Comfortable creation of 3D building plans on the basis of scanned plans
- ▶ Damage documentation
- ▶ Creation of textures
- ▶ Image rectification
- ▶ Extensive reports with direct transfer to MS Excel or MS Word
- ▶ 3D CAD export to Allplan
- ▶ Videos support the familiarization with the product.

Comfortable reports thanks to a rectified photo

Whether you perform quantity determinations of buildings or physical calculations, On-Site Photo provides layouted list reports regarding lengths, circumferences, areas and volumes. Without any additional work you receive clear reports which you can directly transmit to MS Excel or MS Word and, for example, make available to your planning partners. By the way: On-Site Photo offers an innovative Excel LIVE! interface. You define, at a push of a button, which On-Site Photo information you want to be transferred to which Excel cells.

Individual plan design using rectified photos

On-Site Photo offers completely new possibilities for plan designing and visualization. The rectified photos can be accurately positioned - directly under a CAD drawing. Finally, photo and drawing can be exactly placed on top of each other - without disturbing curvatures! You can also use rectified photo sections for surface textures in visualizations. By saving these pixel images, you achieve even more realistic and individual visualizations.

What can be rectified?

On-Site Photo optimally rectifies free-hand photos with perspective distortions, full-scale paper documents, e.g. ground and key plans, not to scale, rotated, contorted or falsified paper documents.



Figure: Comfortable shooting of a facade with On-Site Photo and Allplan

Individual application

On-Site Photo is ideally suited for creating view drawings from photos. Key and ground plans can be similarly prepared on the basis of scanned paper documents - simply, quickly and exactly. Furthermore On-Site Photo supports your work during damage documentation and evaluation.

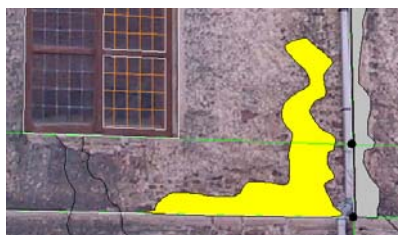


Figure: Support during damage mapping

Creation of 3D plans

On-Site Photo creates 3D ground and key plans from scanned paper documents and exports the data three-dimensionally. The direct connection allows the transfer of views, ground plans or key plans to Allplan at a push of a button. With only one button you define whether On-Site Photo corrects and rectifies the representation or not.

In addition, On-Site Photo offers you a DXF export.

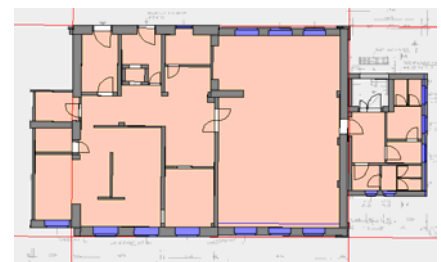


Figure: Creation of plans

System requirements

PC with Windows 2000 or XP

- ▶ 1024 x 768 pixels
- ▶ 16.7 million colors
- ▶ 256 MB RAM main memory
- ▶ 800 MHz Pentium processor
- ▶ 300 MB free hard disk capacity
- ▶ CD-ROM for installation

Further information

Do you need more information or are you interested in a presentation? Then call us: +49 18 01 75 00 00. For current information please look on the internet: www.nemetschek.de.