

# On-Site Survey 2007

## Scope of supply – an overview

Time-saving, mobile recording  
for surveys and re-inspections

On-Site Survey is the most time-saving and innovative method for recording buildings. This modern, mobile survey system has been successfully used in many projects: All relevant building data are digitally recorded in ground plans on site. This is done in connection with a Tablet PC or notebook. Your advantage: The recording is done in just one step – the time-consuming reconstruction and compilation of manually measured dimensions and building information in the office is reduced to a minimum!

### Rapid creation of accurate ground plans on site

On-Site Survey allows to record dimensions on site in digital ground plans which arise from a puzzle of base surfaces. This method provides excellent results and can be easily mastered. Intelligent drawing and measuring functions assure rapid working. For the planning of buildings the recorded ground plans can be easily processed using the Allplan CAD functionalities. The integrated 3D preview shows you at any time if the room situation has been correctly recorded. For the input of measured values you can choose:

- ▶ handwritten pen input when using a Tablet PCs
- ▶ keyboard input of measured values
- ▶ direct transfer of measures from a hand laser; wireless transfer of measured values from hand lasers with Bluetooth technology



Figure: Recording of ground plans with On-Site Survey

- ▶ When using Tablet PCs the entered values are spoken for your safety.
- ▶ Take-over of measured values from rectified photos or scanned ground plans using On-Site Photo; On-Site Survey and On-Site Photo directly work together.

### Ground plans as a multimedia information source

On-Site Survey provides a more flexible recording of information not dealing with measures. Apart from additional data you can integrate multimedia information in the ground plans: Photos or film and sound records describe the building better than text entries (voice recorder, digital camera, camcorder).

### Highlights

- ▶ Sketch and measure ground plans on site
- ▶ Pen control, handwriting recognition and preparation of professional sketches on Tablet PCs
- ▶ Wireless transfer of measured values from hand lasers
- ▶ On-site records of multimedia information (film, speech, photos) – is also available in Allplan.
- ▶ Detailed room book with utilization of room side surfaces and walls
- ▶ 3D CAD export to Allplan
- ▶ Native Allplan elements
- ▶ Videos support the familiarization with the product.

Thus your planning partners and project participants can understand complex correlations without having been on site. Ground plans become a multimedia information source. On-Site Photo enables you to take measures from imbedded photos in your office. Thus you receive views, detailed representations or measures of hardly accessible areas.



### Extensive reports at a push of a button

Based on the ground plans, On-Site Survey quickly delivers room books, measurement records and documentations which, on request, can be saved as Word or Excel documents. The multimedia information is directly available in the documents per mouse click.

### Optional: Special functionalities for facility management

The FM module supports the rapid and safe recording of additional data in facility management projects. The recording of FM data is individually adapted to the project requirements. Useful for the user on site and the quality assurance: the visual check for completeness. The FM data are exported in Excel tables.

### Processing with Allplan CAD modules

All room geometries are three-dimensionally transferred to the Allplan CAD modules. Room features are taken over as well as photos, films and spoken comments. Windows, doors, heaters, niches etc. are transmitted as 3D objects. Furthermore 2D and 3D interfaces to the

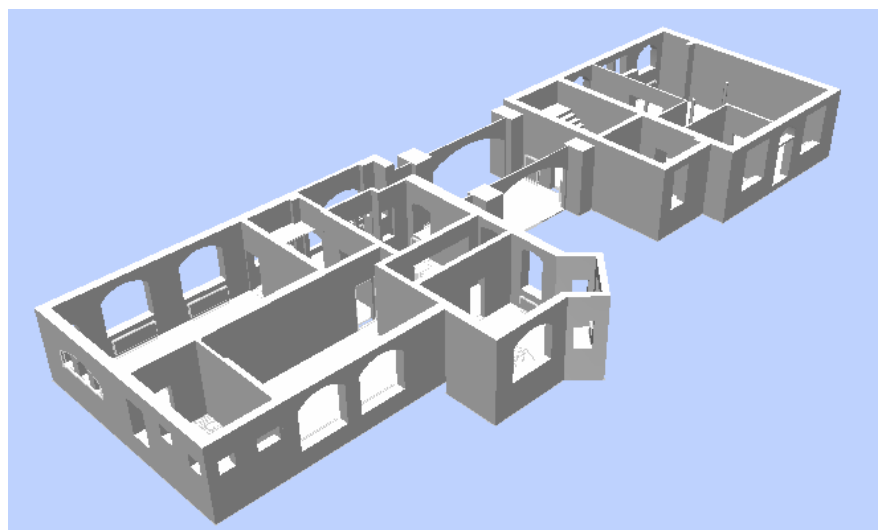


Figure: Representation of the ground plan in On-Site Survey and Allplan

programs AutoCAD and Glaser –isb cad– as well as a DXF interface are available.

### System requirements

- ▶ Tablet PC with XP Tablet PC Edition
- ▶ Notebook with Windows 2000/XP: processor at least 400 MHz, main memory at least 128 MB RAM, at least 1024x768 pixels, 256 colors, 250 MB free hard disk capacity, CD-ROM for program installation

### Further information

Do you need more information or are you interested in a presentation? Then call us: +49 18 01 75 00 00. For current information please look on the internet: [www.nemetschek.de](http://www.nemetschek.de).