

On-Site Photo 2008

Innovation of the current version

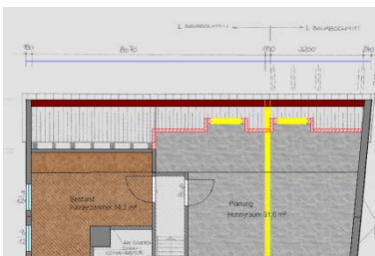
Site Photo 2008 offers the users optimized functions based on the proven preceding versions as well as new work areas and functions. The scope of application and the efficiency of On-Site Photo 2008 have been considerably increased by the planning of solar modules, the design with real colors and textures, and the photo montage function.

Use of camera parameters

- ▶ The lens correction in On-Site Photo 2008 can be performed automatically on the basis of saved camera parameters, if desired.
- ▶ Image plane and lens correction are more comfortable and exact now

New calibration methods

- ▶ The photo calibration can optionally be performed with one reference dimension. Thus, surfaces difficult to reach, e.g. roofs, are recorded on the basis of the measurable house width.
- ▶ Scanned plans without paper distortion are calibrated using a reference dimension.



Calibration of a ground plan

Multiple calibrations

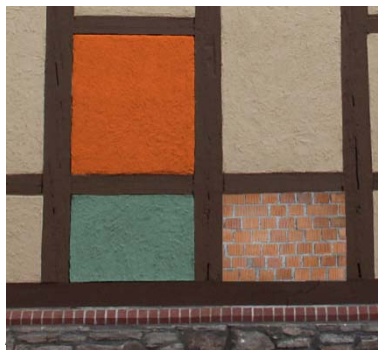
Each project can save several calibrations. The calibration management provides a good overview thanks to the possibility of shifting between the calibrations and the visibility control.

Photo montage

Rectified images are composed with the photo montage function. Individual photos taken from different places are composed to high-resolution views of facades, for example.

Colors and textures

Transparent colors and textures offer you completely new design possibilities. Transparent colors are selected in the integrated Brillux color atlas (RAL Classic included) and placed on redrawn image areas.



View with colors and textures

Existing structures and lighting conditions are maintained, the object appears newly painted. An extensive, integrated texture catalogue provides even more possibilities. Photo 2008 places new textures on selected image areas. All textures with dimensional reference are automatically rendered in the image with



Coloring

the right size and perspective. This function allows, for example, to easily redesign facades with a high quality.



Solar modules

Solar modules

- ▶ The new Solar work area allows the planning and visualization of thermal solar and photovoltaic modules.
- ▶ The integrated module library with approx. 1500 modules can be individually adapted by the user.

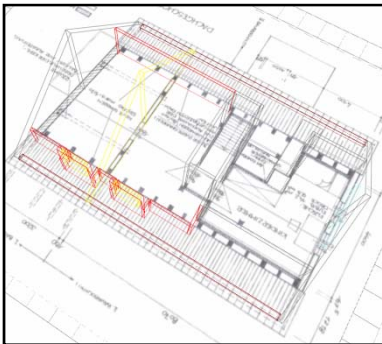
Highlights

- ▶ Windows Vista compatible
- ▶ New calibration methods
- ▶ Multiple calibrations
- ▶ Planning of solar modules
- ▶ Design with colors and textures
- ▶ Photo montage
- ▶ Structured work areas
- ▶ Optimized basic functions

- ▶ Intelligent drawing functions support the correct positioning of single modules and module groups on roof surfaces.
- ▶ The planning can be printed or used for subsequent calculations. An integrated direct interface transfers the data to the program "PVscout" of company Hottgenroth.

Ground plan

- ▶ This work area has been extended by the drawing function for gable walls and floor /ceiling plates.
- ▶ The 3D preview with an image underneath improves the overview.
- ▶ The interface to Allplan has been extended by these new elements. In Allplan, native components are generated.



3D preview with gable wall and floor plate

Enveloping surfaces

The export of enveloping surfaces to Excel has been extended.

Views

The new mapping system allows the use of all representation functions in each work area. Surfaces can be shown as empty surfaces, with a pattern, a color, a transparent color or a texture. Thus, the damage mapping can be performed in

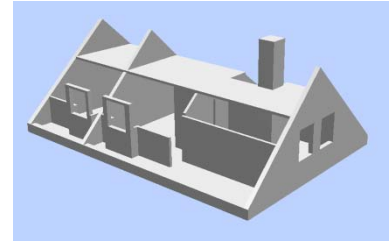
photographed views and scanned plans. There are 100 mappings available, which can be individually adjusted.

Optimizations

- ▶ Work areas comprise all functions necessary for a selectable task. Despite its many functions, On-Site Photo 2008 is clearly structured and can be easily controlled. Functional groups which are not always needed can be masked.
- ▶ The text is a new element in all work areas.
- ▶ The surface finder has been improved, and finds surfaces faster and more reliably now. The search area of the surface finder can be limited to desired elements.
- ▶ The reports are more detailed and structured. Logical connections and the visibility of elements are taken into account.
- ▶ The new display control allows to manage the visibility of each element. Thus representations can be systematically adjusted.
- ▶ The examples to be selected after the program start demonstrate the possibilities of each work area.
- ▶ A new export function exports all data, images and textures of one project to a selectable path. Thus, a simple project transfer is supported.

Allplan Export

- ▶ The interface for the 3D direct export has been extended and is compatible with the Allplan versions 2006 and 2008.
- ▶ The On-Site Photo 2008 user can freely select the elements to be exported and define the image section for the export.



3D model in Allplan

System requirements

- ▶ Windows 2000/XP/Vista
- ▶ 1000 MHz processor,
- ▶ 512 MB RAM main memory,
- ▶ at least 1024x768 pixels,
- ▶ at least 256 colors,
- ▶ 400 MB hard disk capacity,
- ▶ CD-ROM for installation

Further Information

If you need additional information or would like to find out more about one of our products, please contact your local Nemetschek dealer or visit our website at: www.2008.allplan.com